



Implementing Washington's RFS

Puget Sound Clean Cities Coalition
Biodiesel Quality Workshop
October 23, 2007

Jeff Canaan, Bioenergy Coordinator
jcanaan@agr.wa.gov
360-902-1918

Washington's RFS



WSDA Director and Biofuels Advisory Committee recommended implementation:

- 2% biodiesel by November 30, 2008
- 2% ethanol by December 1, 2008

Washington's RFS



Biofuels Advisory Committee Report highlighted two near-term priorities:

1. Motor Fuel Quality

- Support for WSDA quality and labeling program
- Meaningful enforcement

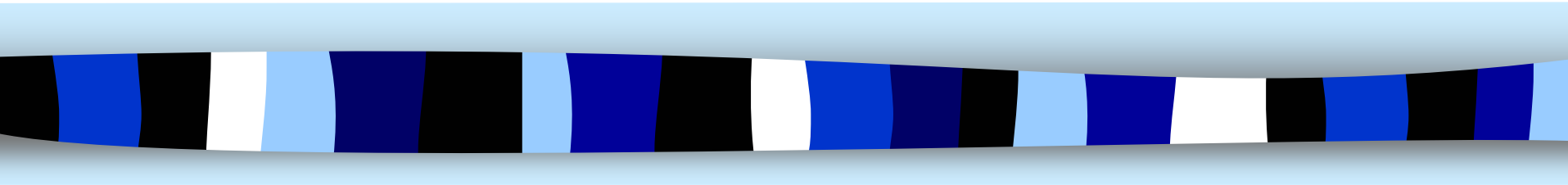
2. Oilseed Feedstock

- Research & education
- Consideration of incentives

Report Available at: <http://agr.wa.gov/bioenergy/>



Preparing for the RFS

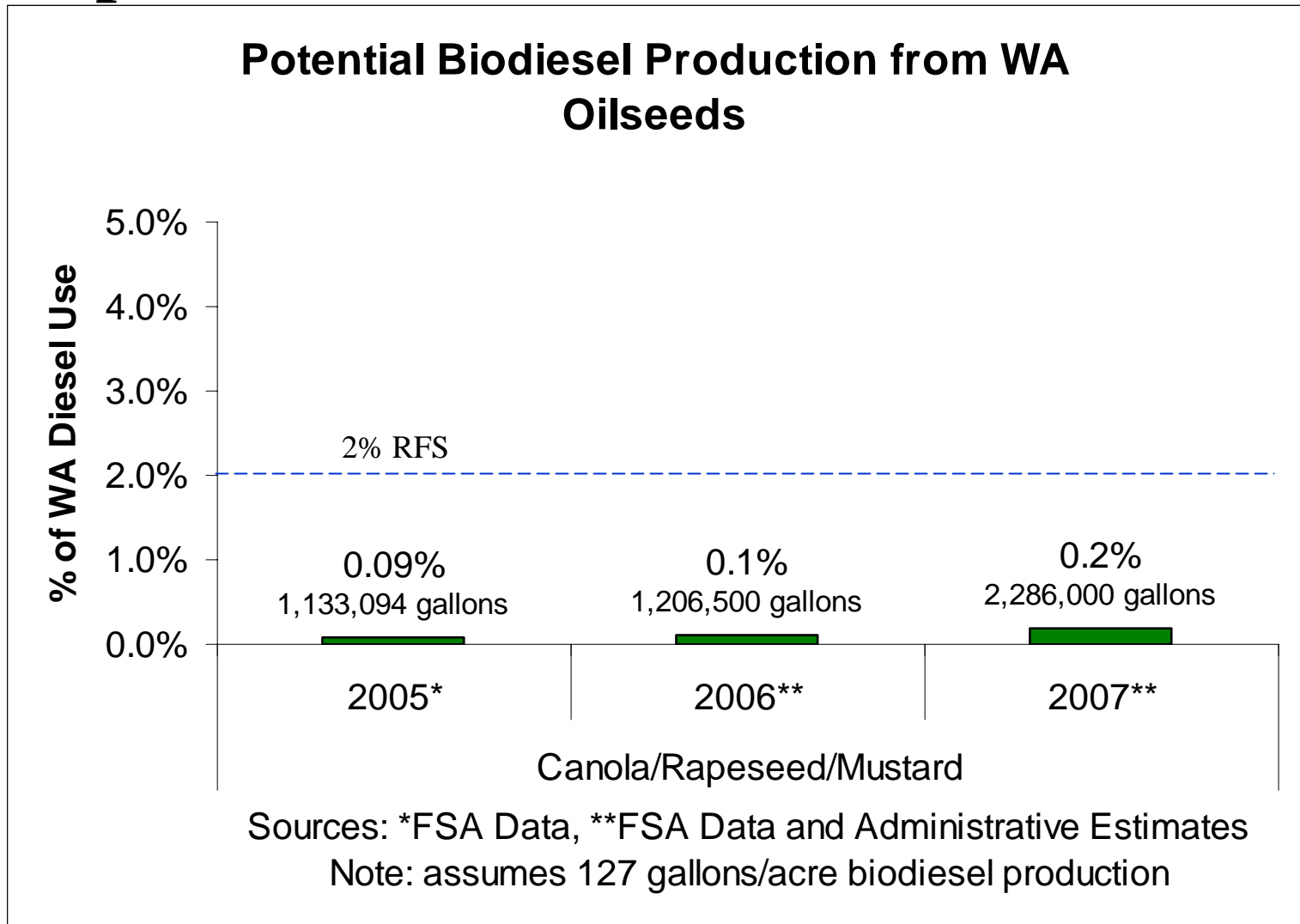


Motor Fuel Quality: WSDA Preparation



- **Adopted Quality and Labeling Rules**
- **Implemented Biofuels Quality Assurance Program**

Oilseed Feedstock: WSDA Preparation



Oilseed Feedstock: WSDA Preparation



Freedom Loan Program

- Four oilseed crushing projects
 - Natural Selection Farms: operational
 - Inland Empire Oilseeds: Spring '08
 - Washington Biodiesel: Fall '08
 - Palouse Bio: Fall '08
- Future project may be funded by the legislature and administered by CTED

Oilseed Feedstock: WSDA Preparation



WSDA/WSU Near-term, Applied Research

- Growing the crops—Improved Agronomics
- Adding Value—Improved Economics

WSDA Education and Outreach

- Agronomics
- Economics & rotational benefits
- Success stories
- Crop insurance availability



Other Agency Preparation

General Administration (GA):

- Monitoring B20 use requirement in state fleet

Department of Transportation (WSDOT):

- Placing biodiesel in Western WA fueling stations in preparation for B20 requirement
- **Working to implement B20 in ferries system**

Department of Licensing (DOL):

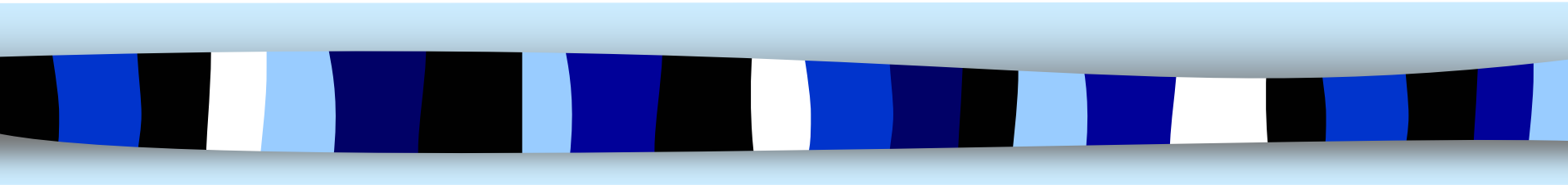
- **Implemented new program to track biofuels use in WA**

Department of Community, Trade and Economic Development:

- **Hired Bioenergy Coordinator (Peter Moulton)**
- Will administer the Energy Freedom Program



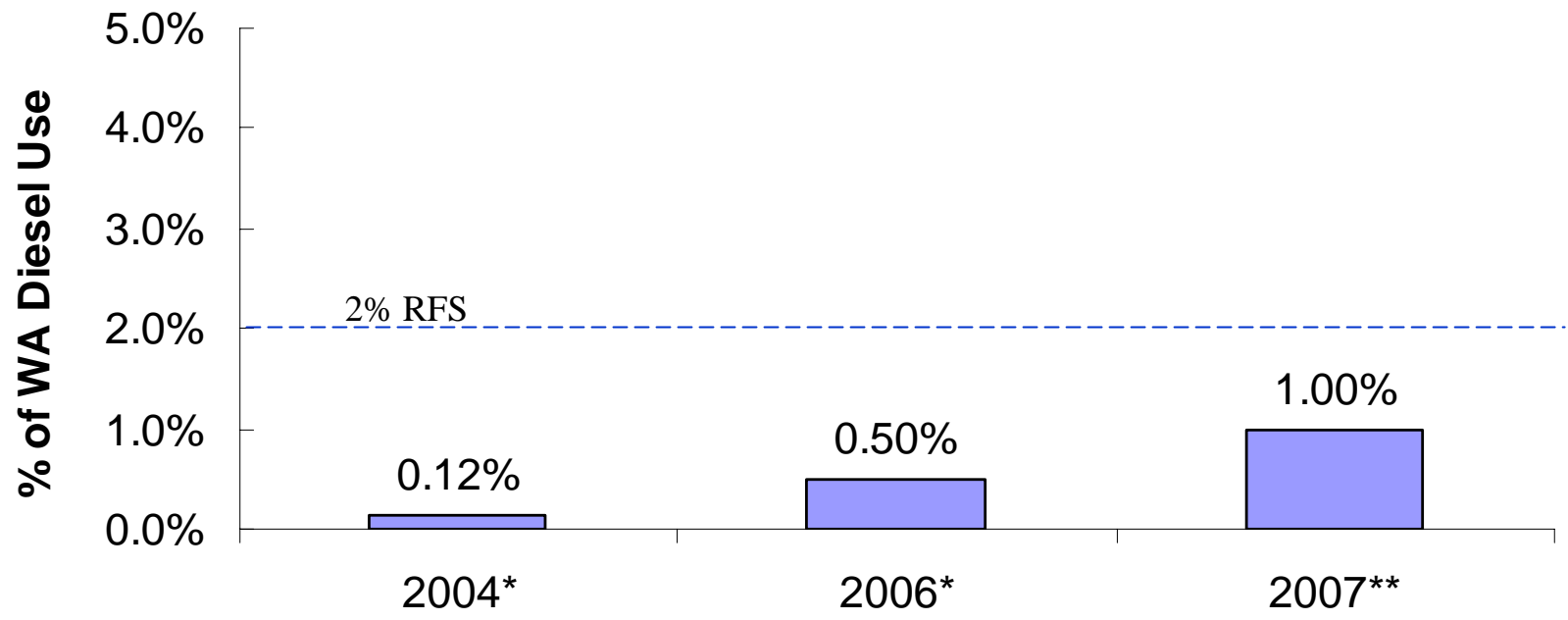
Where we are . . .



Consumer Demand



Biodiesel Consumption in Washington State

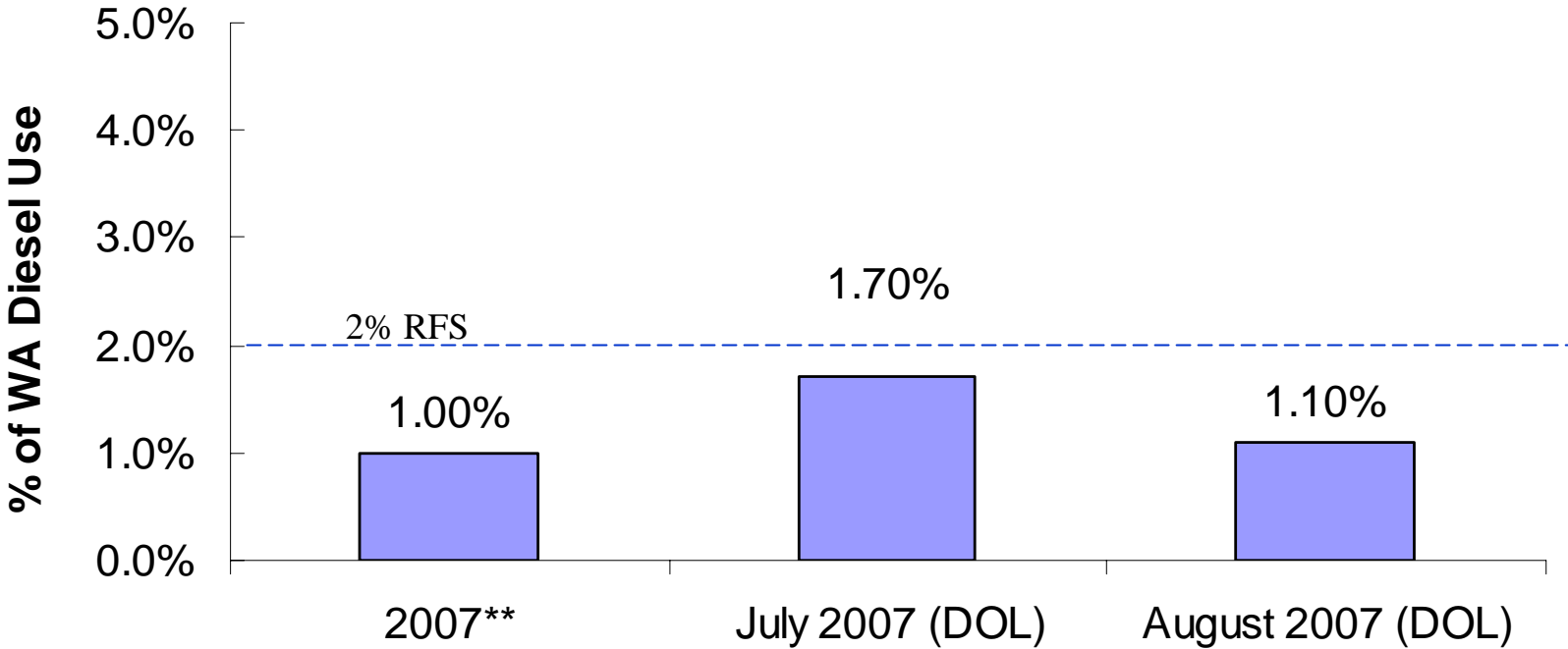


Sources: *WSU Energy Program, **Projected: WSDA informal survey

Consumer Demand



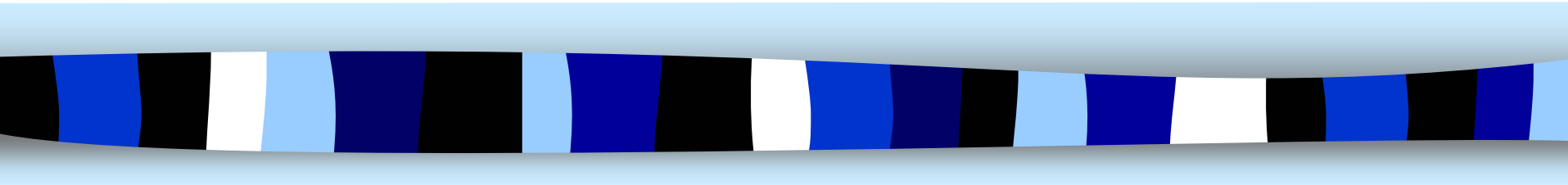
Biodiesel Consumption in Washington State



Source: **Projected: WSDA informal survey



Where we're going . . .





Increasing the RFS

RCW 19.112

Increase the RFS to B5 when “both in-state oilseed crushing capacity and feedstock grown in Washington State can satisfy a three-percent requirement.”



Increasing the RFS

RCW 19.112

Increase the RFS to B5 when “both in-state oilseed crushing capacity and feedstock grown in Washington State can satisfy a three-percent requirement.”

3% Requirement = 36,000,000 gallons

Oilseed Crush Capacity = 400,000 tons/year

Oilseed Acreage = 330,000-280,000 acres



Implementing the RFS

2% Biodiesel Standard

- Biodiesel consumption in Washington is well on its way to 2%
- Agencies are working hard to make the 2% RFS a success

5% Biodiesel Standard

- *Proposed* oilseed crushing capacity will satisfy the condition for RFS increase
- Oilseed production in WA must increase about 15 times to trigger RFS increase
- Can WA support this level of oilseed production?



Implementing Washington's RFS

Puget Sound Clean Cities Coalition
Biodiesel Quality Workshop
October 23, 2007

Jeff Canaan, Bioenergy Coordinator
jcanaan@agr.wa.gov
360-902-1918